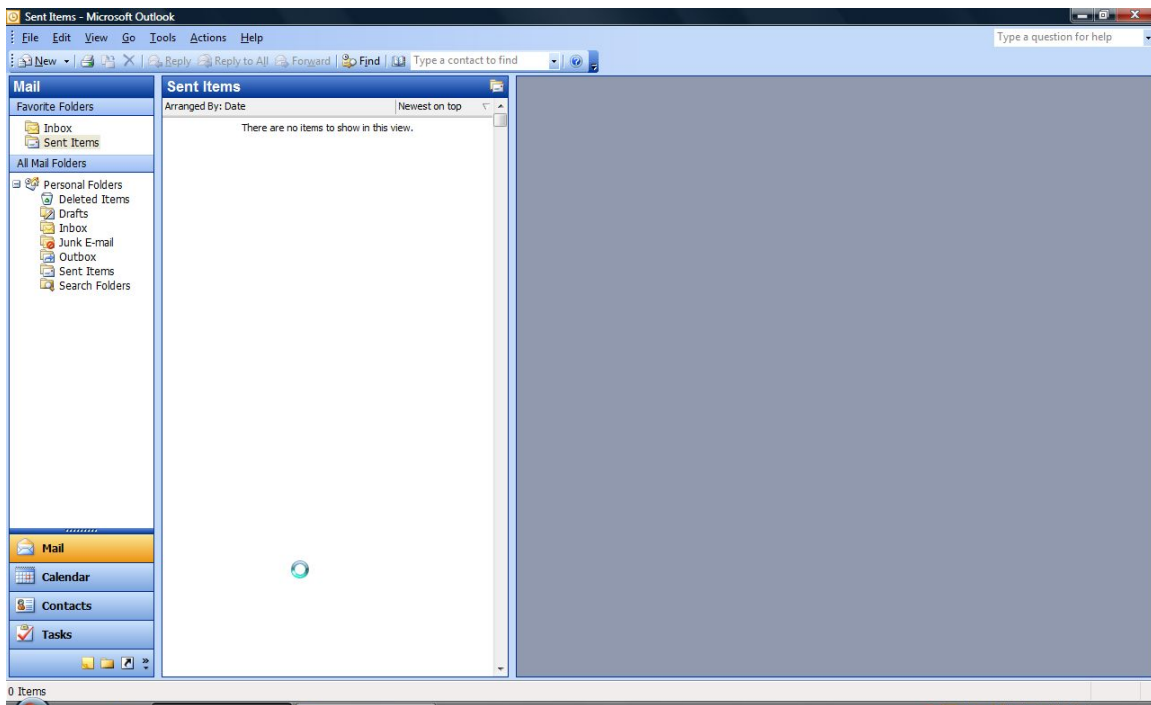


We have upgraded our servers and need to make 2 changes:

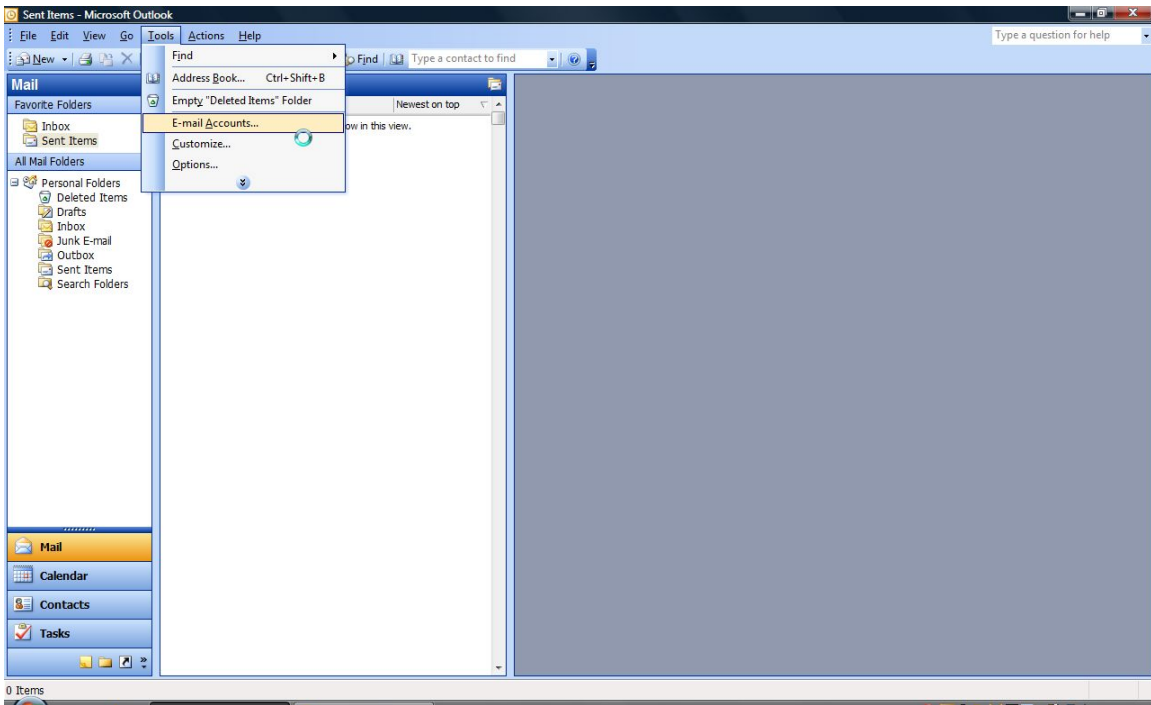
1. Add @comsouth.net to your Account Name
2. Check the box “My outgoing Server requires authentication”

The reasons for these changes are many. In our fight to curb spam we are now requiring a password to send an E-Mail out. This should slow down viruses and outsiders from our network to be able to send spam through our servers. This will also keep us off blacklists. These lists are created by good intending sites that are also in a war against spam. However they blacklist companies simply if you do not authenticate your outgoing mail. Many ISP's use these blacklists and it disrupts the flow of good e-mail when you get on these lists. We are also offering larger mailboxes to accommodate more and larger e-mail. The separate Postini spam filtering will be incorporated to a GreyMail filtering. This will also offer real-time Virus protection. This does not mean you do not need protection on your PC, it only means one more level of protection. Personal Web Space and N Drive are also two new added value features.

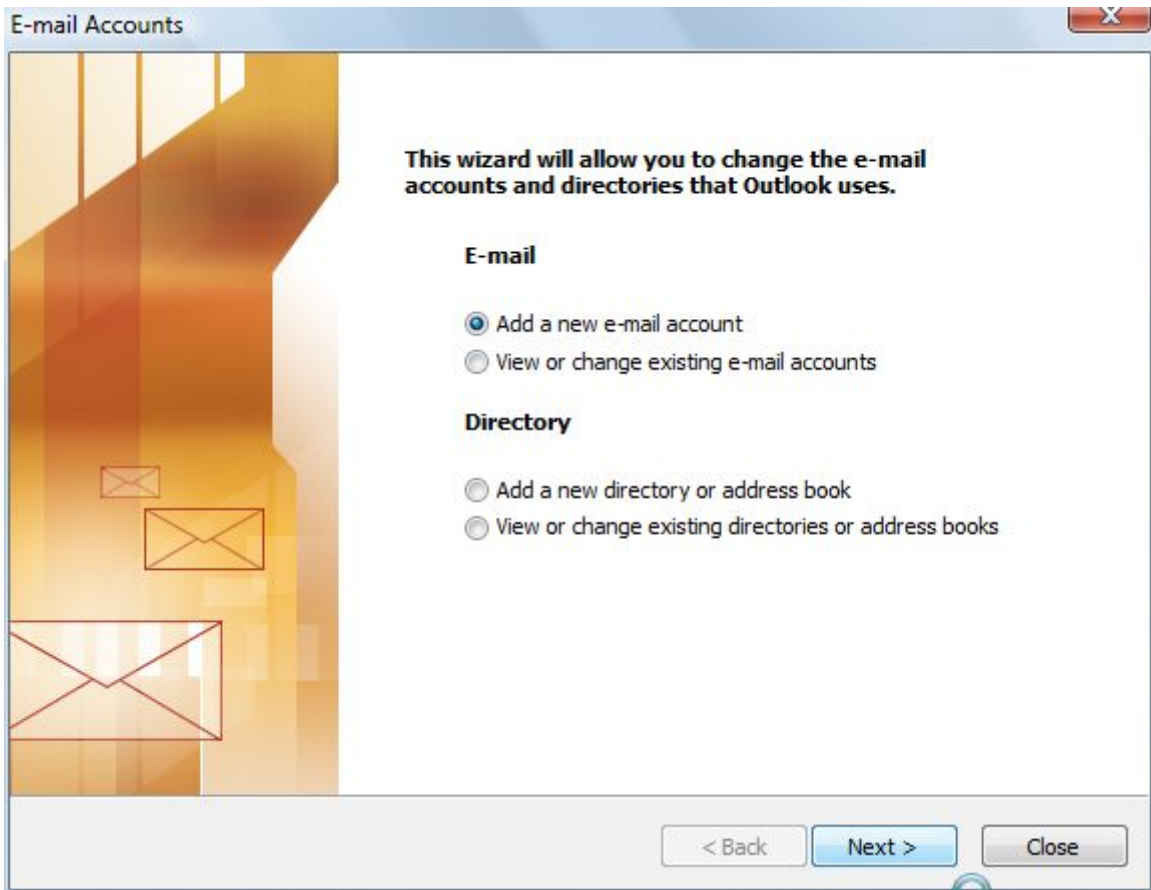
The steps below are screen shots while setting up @comsouth.net E-Mail settings for Outlook 2003



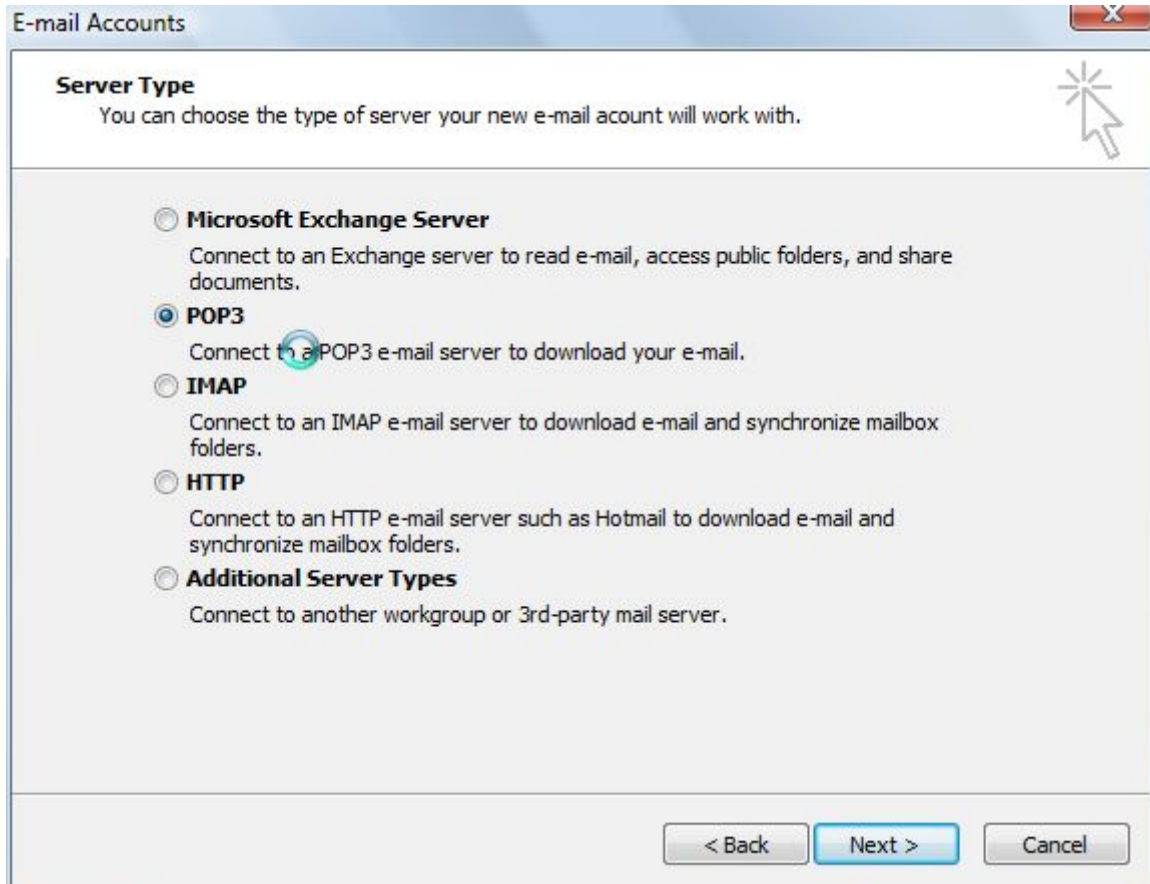
In Outlook 2003 click on tools



Tools and E-Mail Accounts



Click on Add a new e-mail account if you are setting up a new account
Click Next
Go to steps after finish if you are changing



Pick POP3 account and click next

E-mail Accounts

Internet E-mail Settings (POP3)
Each of these settings are required to get your e-mail account working.

User Information
Your Name:
E-mail Address:

Server Information
Incoming mail server (POP3):
Outgoing mail server (SMTP):

Logon Information
User Name:
Password:
 Remember password
 Log on using Secure Password Authentication (SPA)

Test Settings
After filling out the information on this screen, we recommend you test your account by clicking the button below. (Requires network connection)

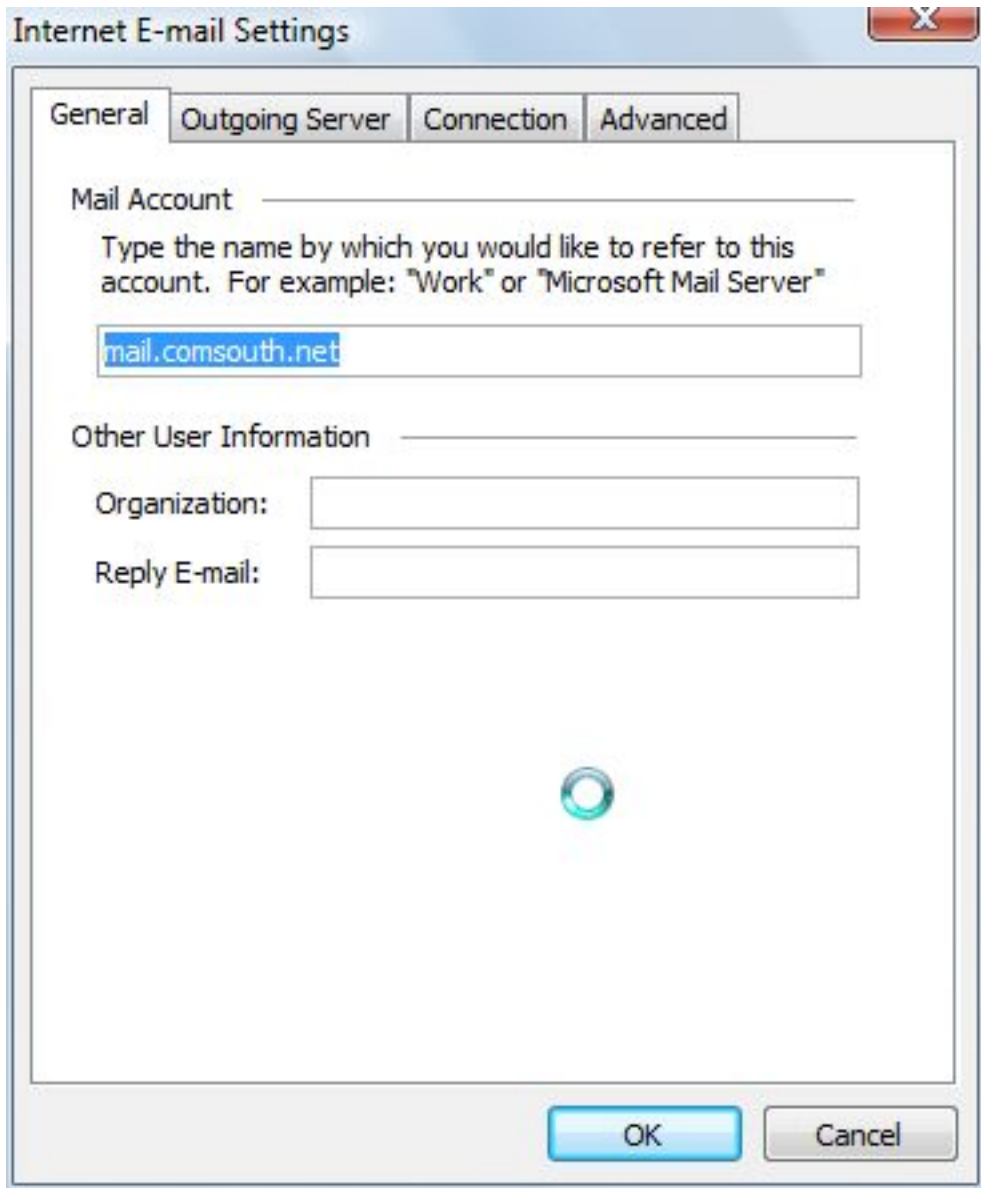
Fill in your name as it will be seen on the internet
Your user name @comsouth.net

Mail Servers:

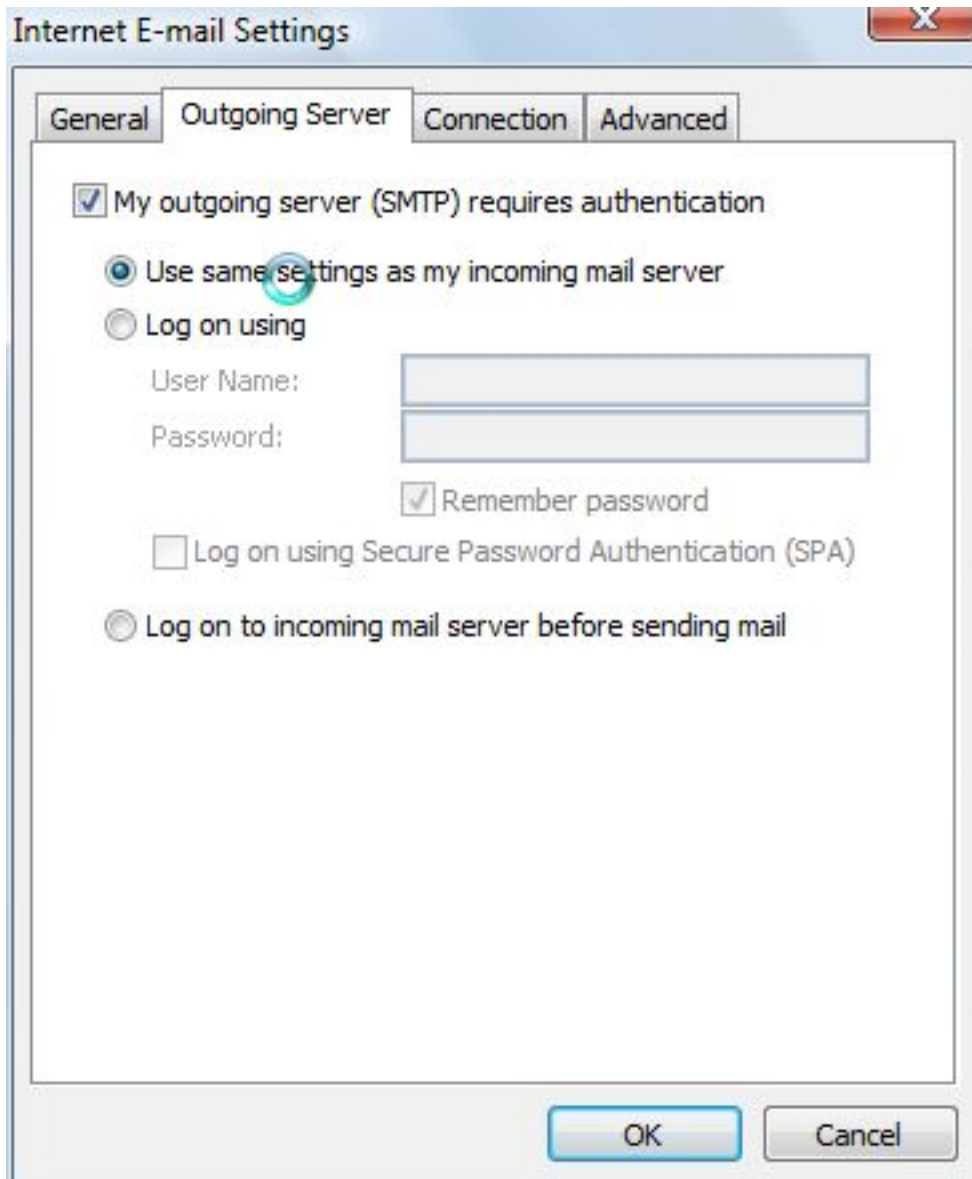
Incoming (POP3) : mail.comsouth.net
Outgoing (SMTP) : smtp.comsouth.net

User name: your [name@comsouth.net](#)
Password: and remember it if you choose.

Click on more settings

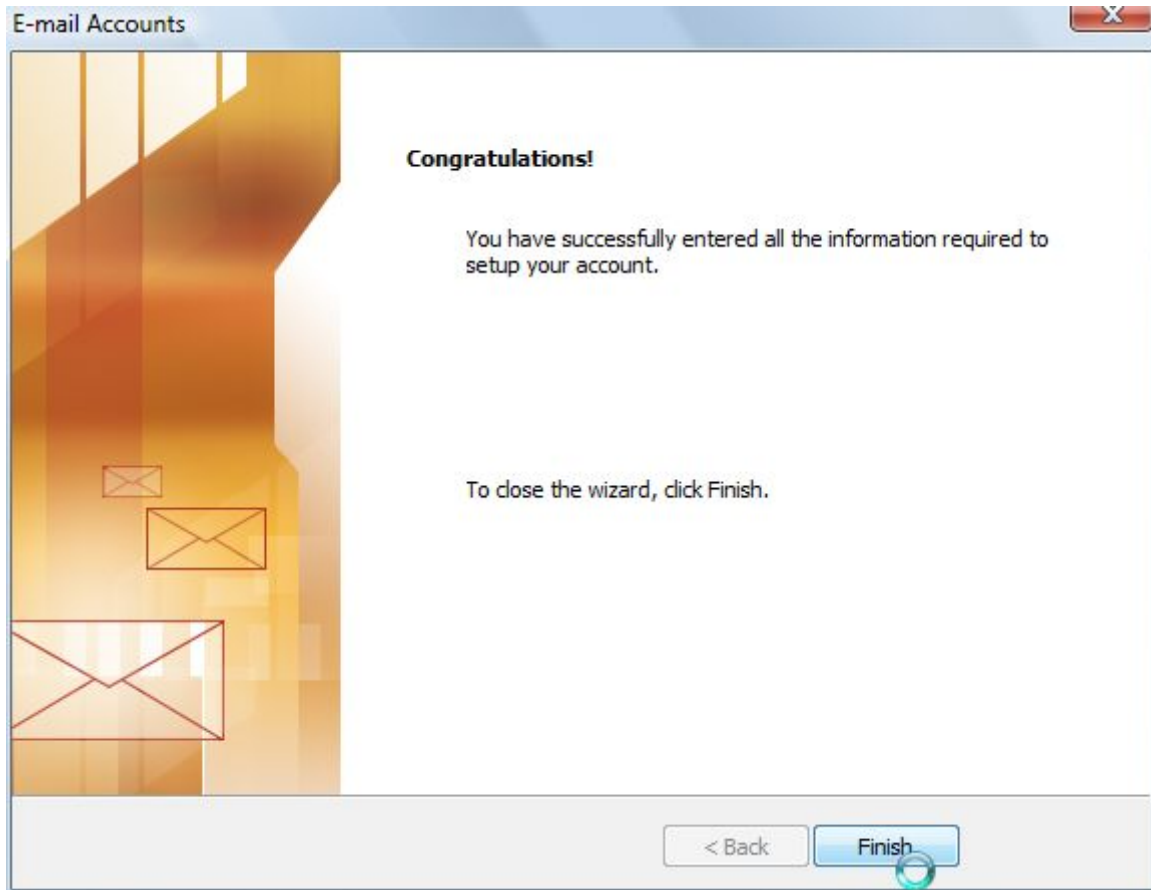


Click on the Outgoing Server tab

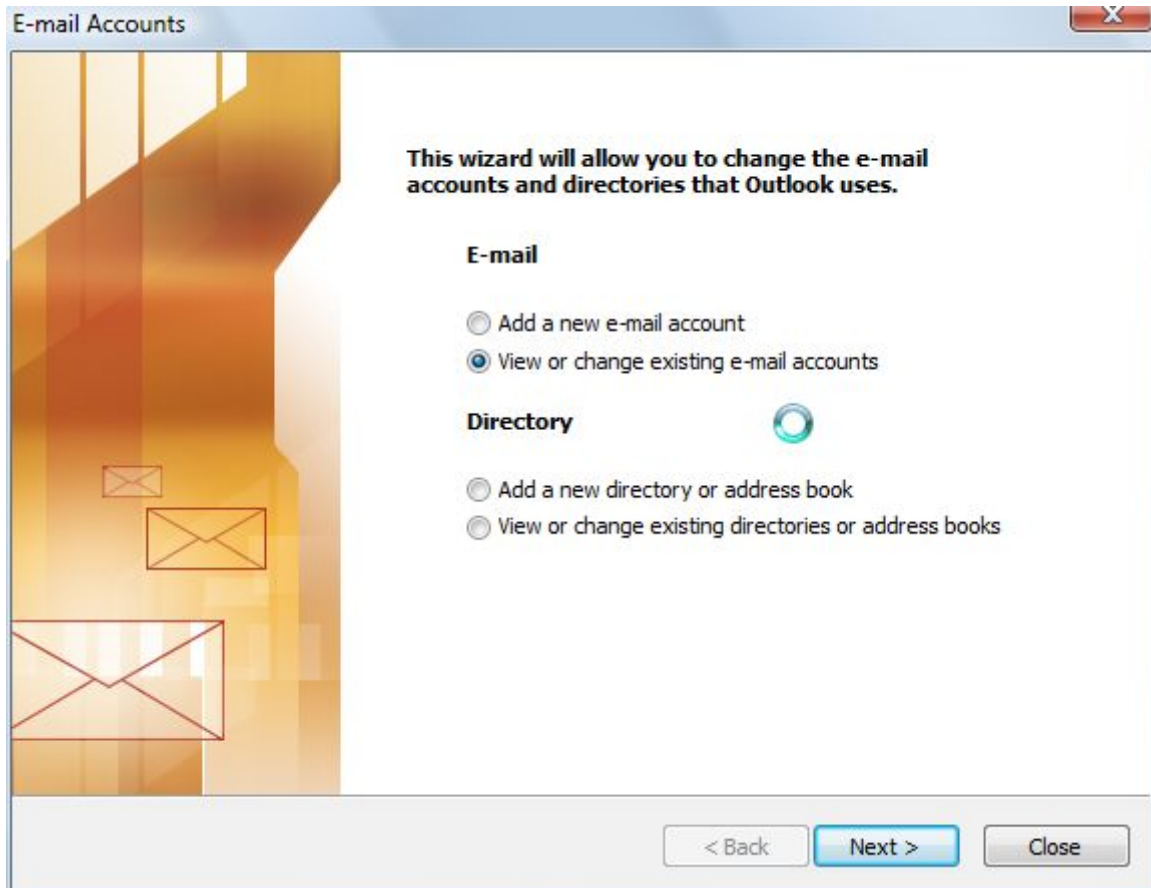


Check the box “My outgoing server (SMTP) requires authentication

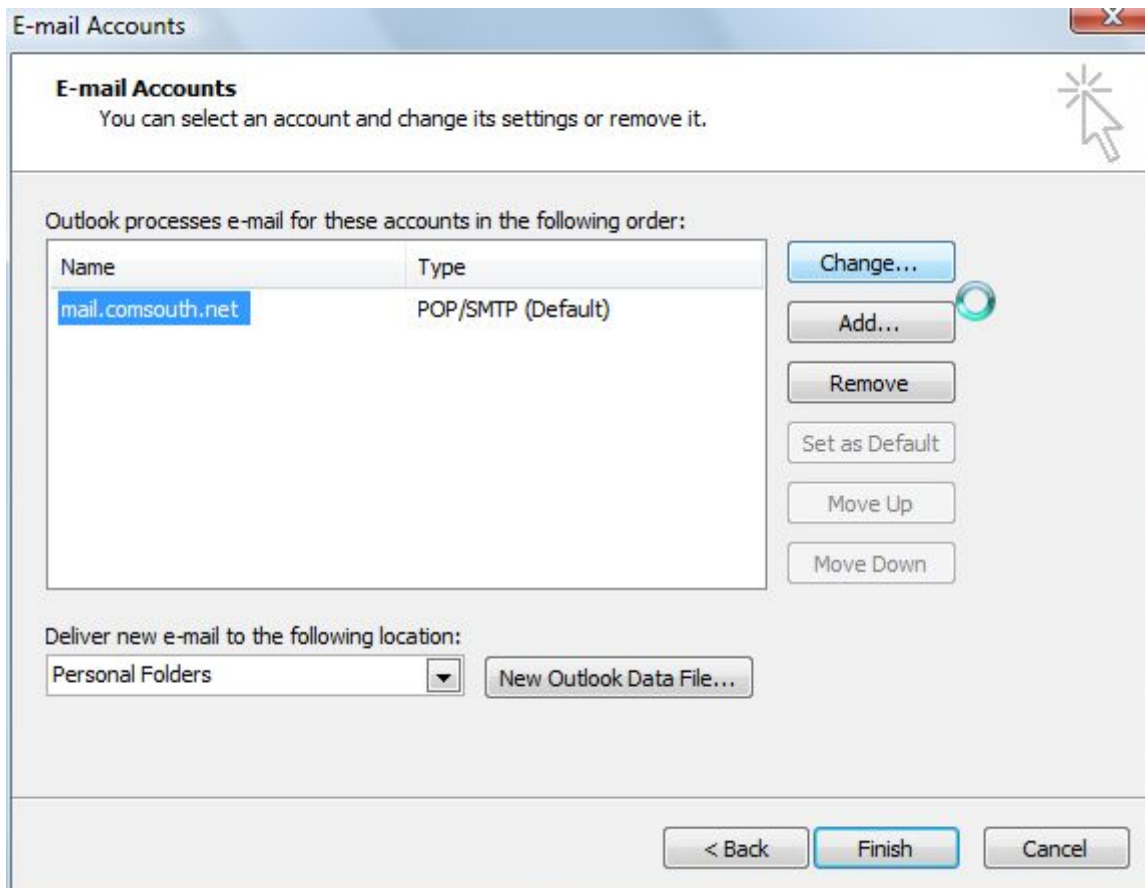
Click on OK



If your are changing settings you are not finished



Click on View or Change if changing an existing account, click next




Click on Change

E-mail Accounts

Internet E-mail Settings (POP3)

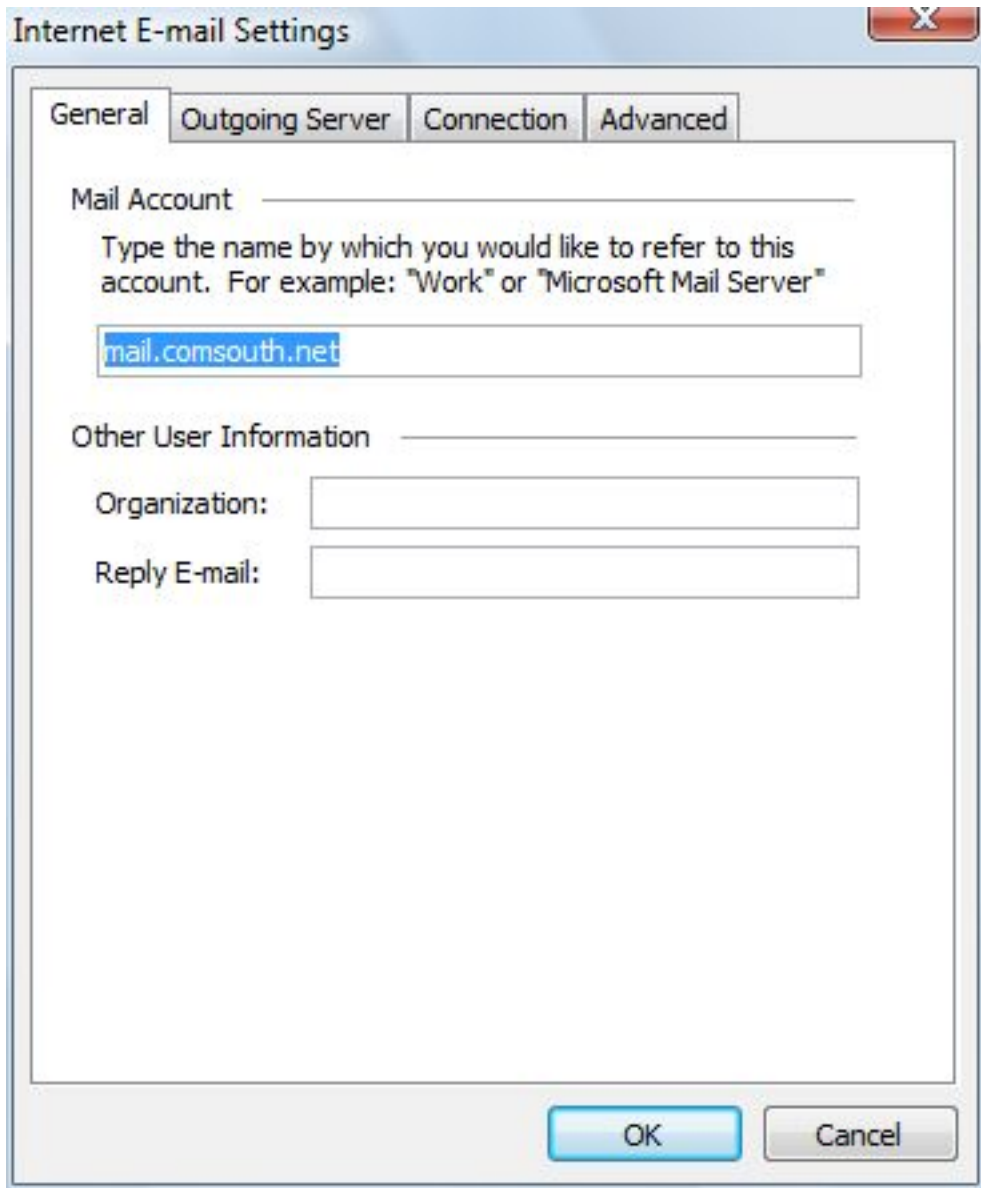
Each of these settings are required to get your e-mail account working.

User Information	Server Information
Your Name: <input type="text" value="your name"/>	Incoming mail server (POP3): <input type="text" value="mail.comsouth.net"/>
E-mail Address: <input type="text" value="yourname@comsouth.net"/>	Outgoing mail server (SMTP): <input type="text" value="smtp.comsouth.net"/>
Logon Information	Test Settings
User Name: <input type="text" value="yourname@comsouth.net"/>	After filling out the information on this screen, we recommend you test your account by clicking the button below. (Requires network connection)
Password: <input type="password" value="*****"/> 	
<input checked="" type="checkbox"/> Remember password	<input type="button" value="Test Account Settings ..."/>
<input type="checkbox"/> Log on using Secure Password Authentication (SPA)	<input type="button" value="More Settings ..."/>

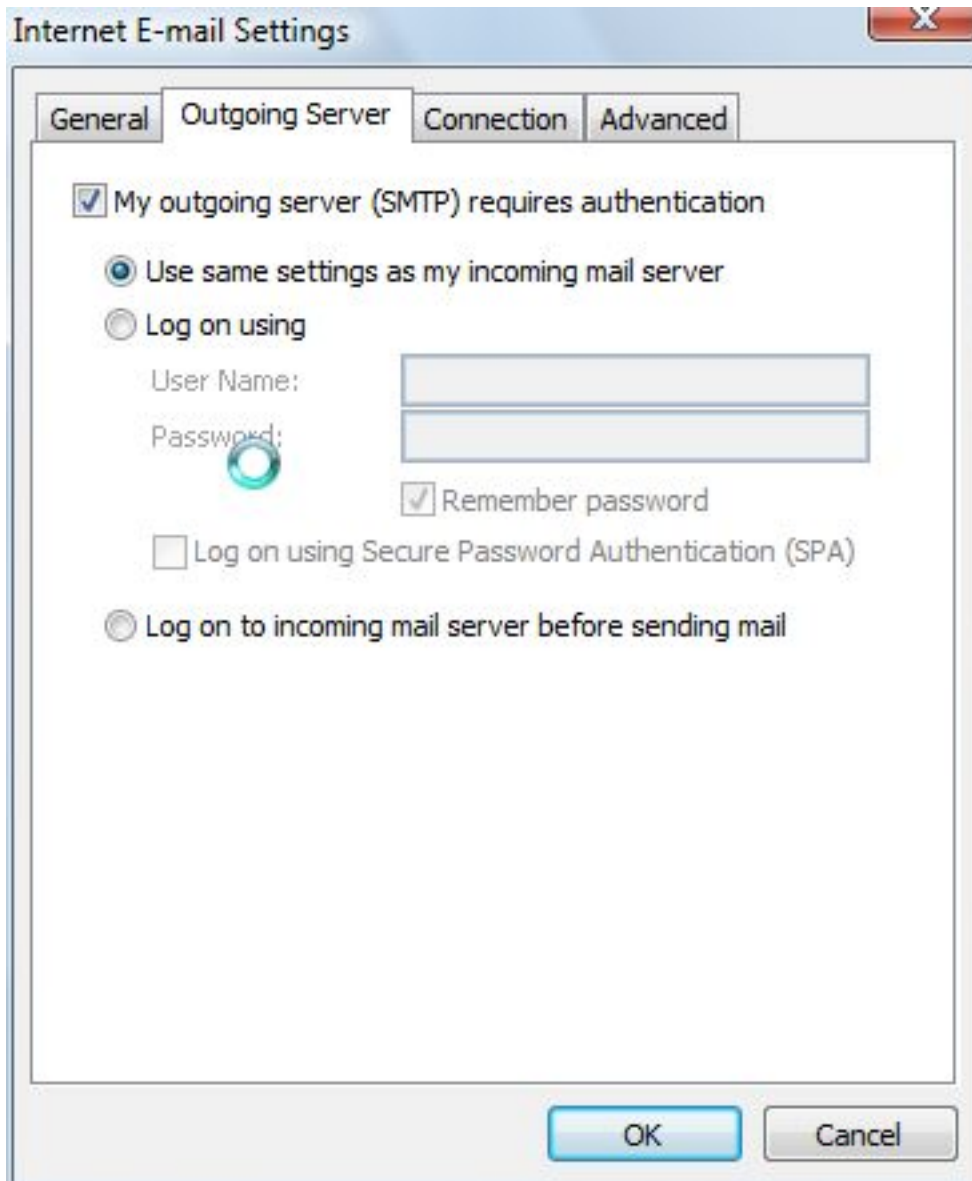
< Back Next > Cancel

Make sure you add @comsouth.net to your user name

Click more settings



Click on Outgoing Server Tab



Make sure the box is checked "My outgoing server (SMTP) requires authentication"
Click OK and repeat to close out.